



'They alone live who live for others'
- Swami Vivekananda

Global Monument
of
**SWAMI
VIVEKANANDA**
100 Feet Monolithic Statue



To spread the message of Universal Love,
Peace and Harmony to mankind

Sri Ramakrishna Sharada Ashrama (Bailur Math) (R)
Bailur, Karkala Tq. - 574102, Udupi Dist., Karnataka.
E-mail: bailurashram1@gmail.com www.rkashrambailurmath.org



Holy Mother's Rock



Prayer Hall



Vivekananda Tyaga Mantap



River Swarna Ganga

About Us

Around the year 2004 the triple institutions – Sri Ramakrishna Ashrama (the Men Monastic Wing), Sri Sharada Ashrama (the Women Monastic Wing) and Sri Ramakrishna Sharada Ashrama (the Missionary and Service Wing) emerged out dedicated to the twin ideals : 'for one's own salvation and for the welfare of the world' (आत्मनो मोक्षार्थं जगद् हिताय च - *Ātmano Mokṣārtham Jagad Hitāya Ca*) as set by Swami Vivekananda.

The Ashramas have provisions for monastics, non-monastics and Vānaprasthās interested in leading a pure spiritual life. Sri Ramakrishna Sharada Ashrama is recognised and registered under IT Dept., Govt. of India as public charitable Trust.

The Ashramas at Bailur, Karkala, Udupi, (Popularly known as BAILUR MATH) are not branches of the Ramakrishna Math and Mission, Belur, Howrah, but precisely work on the same principles and closely follow the same ideals and ideology.

Our Location

The Ashrama is located on the bank of a graceful perennial river, the Swarnaganga. The place is called Yerlapady, Bailur in the famous Karkala Taluk of the Udupi District in the South Canara region of Karnataka. 23 kms to the North is Udupi and 22 kms to the South is Karkala.

Activities of the Ashrama

All the activities of Ashrama are centred around the one theme : 'for one's own salvation and for the welfare of the world' (आत्मनो मोक्षार्थं जगद् हिताय च - *Ātmano Mokṣārtham Jagad Hitāya Ca*).

Apart from the daily internal activities, the Inmates' personal spiritual practices and disciplines for one's own spiritual attainments and as a part of monastic life include self-culturing, prayers, worship, Japa, meditation, physical exercises, music, studies and learning. Successively by turns, one inmate for a month, sits for Tapasya.

The external activities include moral and spiritual training, daily worship, festivals, celebrations, spiritual/scriptural discourses, workshops for youth; educational, medical and financial help to the needy, attending to devotees, visitors, website, counselling and other public service activities.



Puja and Celebrations



Interfaith Workshops



Leadership training programs



Student Seminars

Our Inspiration

Revered Swami Vinayakanandaji Maharaj began his spiritual journey by joining Sri Ramakrishna Math, Basavanagudi, Bangalore in 1977 and received his Mantra Diksha and Brahmacharya Diksha from Revered Swami Veereshwaranandaji Maharaj, the 10th President of Ramakrishna Math and Mission. In 1987 he was initiated into the holy order of Sannyasa by Revered Swami Gambhiranandaji Maharaj, the 11th President of Ramakrishna Math and Mission. After his joining the Order for the next 14 years he patterned his life along the supreme ideals of Renunciation and Service.



At the end of this period he was inspired to practice intense Tapasya in order to achieve the Supreme Goal of Human Life, God Realization as told by Sri Ramakrishna Paramahansa Deva. Taking due permission and blessings from the senior Monks of the order, he entered into solitude in the dense Churna forest of the Satpura Ranges in Madhya Pradesh situated on banks of River Narmada. He got settled in a place of complete isolation free from any human habitation, surviving on the naturally available fruits and roots and a bag of beaten rice which would be delivered to him once in every 2 or 3 month by a generous forest officer. Having spent many years in such a manner he took to the life of a wandering monk travelling to the Himalayas and finally coming to Udupi in 2001 as a part of his sojourns.

Seeing the purity of life, and the noble desire to love and serve all beings manifested in his person, a group of devotees decided to renounce and lead their life along the twin Ideals of self-salvation and service of the world under his guidance. This led to the genesis of the current Ashrama. He stands aloof as an uninvolved silent inspirer radiating pure spirituality correcting us when we err, and nursing and nourishing our spiritual infancy.

Founder President - Sri Ramakrishna Sharada Ashrama

Smt. Sumatha Nayak - A compassionate mother at heart, enthusiastic, gifted, a seeker of Truth and above all an ardent devotee and admirer of Swami Vivekananda from Manipal is the person who took the responsibility of building up the Ashrama, and has been taking care of the Ashrama and looking after the needs of renunciates and inmates of the Ashrama.

Leading by example and involving actively, she spearheads the various initiatives of Sri Ramakrishna Sharada Ashrama (The Missionary and Service wing).



The Inmates

To practise, preserve and promote the timeless treasures of India's rich Spiritual heritage, a group of educated youngsters and experienced elders hailing from various cultural backgrounds and walks of life, work in harmony dedicating themselves to the common Ideal of God Realization and Service to Humanity.



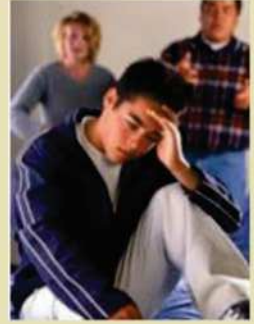
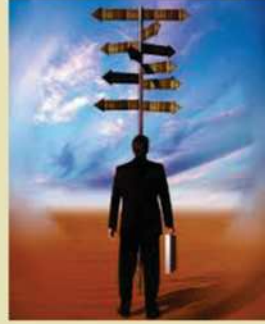
Present Global Condition

A stormy delusive current of materialism is engulfing this beautiful world of ours. Today we are living in a world of increasing violence, conflicting views, atrocities against the innocent and utter selfishness. The younger generation is totally mesmerized - drawn to and dragged by the elusive temptations which are bound to be destructive and be the causes of intense suffering and bondage. The modernity has presented highest challenge to mankind.

On the other hand the modern man is torn between religious dogmas and technological illusions. Man today, has lost his inner peace. From a child at school to an old man nearing his grave, everyone is tense and weeping within himself hidingly. Thinking that they are at the top of the world, the youths are running to its end.

Youth at cross roads

The entire youth world is at cross-roads not knowing which way to go. Some are getting education; many are not. Education is increasing their intelligence and is not expanding their heart. Deprived of character building and life transforming education, they are becoming perverted. The intense craving for enjoyment and the materialistic on rush have captured the young minds. There is total self-forgetfulness, identity crisis, aimlessness and darkness in their path, none to guide, none to stand as examples, none to lift them up, not even the parents. After education and on entering family life, they are possessed by tension, depression and frustration.



Need of the Hour

- 1) Global awakening to the higher human ideals and higher human values.
- 2) Awakening common man, the earning section, to civic sense, social responsibilities, giving spiritual and moral training for a life of peace, contentment, mutual love and joyful ways.
- 3) Youth Transformation.
- 4) New Generation : Path Setting for children, Training parents and teachers.
- 5) Bestowing peace and solace to the aged and to the physically and mentally challenged.
- 6) Global Integration to achieve one world of Love, Peace and Harmony.

The Only Solution

To overcome the challenges of modernity, the mankind is facing in general and the youth particular, the only option left for us now is to raise the Human-Consciousness to a higher level.

First thing needed to be done is, to present higher ideas and ideals to mankind, especially the younger generation. Those higher ideas and ideals must be made a part of their awareness. That awareness itself will propel them forward. By doing so, they evolve naturally in a secured way and reach perfection. From it flows out universal love, purity, service and sacrifice.

Objective : To place an Ideal before youth

Swami Vivekananda is perfect human ideal; an ideal for all times for all people at all places. He is youth icon.

Free from politics, free from all differences of caste, creed, religion, race or nationality. A well-wisher of all and loved by all. He is embodiment of strength and purity, of universal love and patriotism, of supreme knowledge and pure devotion, of unselfishness and dedication, of service and sacrifice, of renunciation and asceticism. The world must receive his message and be blessed to bless the rest of the world.

Global Monument of SWAMI VIVEKANANDA

The Monument

We wish to keep these ideals in front of the youth by erecting a grand 100ft Monolithic statue of Swami Vivekananda and creating an suitable ambient atmosphere around it, which will draw the attention of global youth towards it. The Statue shall stand proclaiming and reminding the mankind for thousands of years to come, the Supreme Ideals, the noble thoughts and Eternal values which make every soul manifest the inner Divinity and plunge the world in peace.

HE shall stand as a universal model, the essence of world cultures, pure spirituality that unites the world, the heart that loves and seeks the welfare of entire humanity.

Future Plans

The statue ignites the hearts. Then it has to be sustained till attainment of Perfection, the state of Everlasting Bliss and Freedom. For this project to find its ultimate success, it is inevitable that centering round the statue there should be a world-embracing Cultural, Spiritual and Educational Centres, a single visit must be able to bring about an internal transformation in the man visiting the place.

Cultural Centre: A place preserving and presenting the various world cultures as the diverse expressions of the creativity in man, highlighting their underlying harmony in order to broaden the mind of the person visiting. Apart from display there shall be training centres in all types of cultural aspects — arts, sculpture, music, dance, handicrafts, village products etc.

Spiritual Centre: An oasis for people of all faiths, cultures and religious backgrounds, filling their hearts with the much needed - 'peace and harmony' - in today's society. A centre for understanding and practicing the essence of all world religions. There shall be training institutes in spiritual practices for attainments and application in day to day life.

Education Centre: It shall be a ground for developing various aspects of man : Along with the commonly given science and technology there shall be the physical, emotional, creative, moral, aesthetic, intellectual and spiritual training centres, providing the knowledge required to build a united world of peace, love and harmony. The primary aim of this centre is to give holistic education and also to concentrate on leadership training modules for youths, thereby empowering the Indian youths to be leaders on the national and international platforms.



100 Feet Monolithic Statue

Significance of an Image

Swami Vivekananda said, " *I am a voice without a form*".....
"My name should not be made prominent; it is my ideas that I want to see realised".

In fact, We shall be truly following his words only by translating his teachings into our life, and live the life he wanted us to live. We have to do that. We shall surely take the vow to dedicate our lives for his cause. Yet, there is a need of a form; though it does not voice, it speaks unceasingly through silence.

An image, icon, picture or a statue, reminds us of the ideal the person or deity stands for. It is a burning ideal before us, constantly reminding and pushing us forward. The ideal and the form are associated like speech and the meaning it conveys. They enter our consciousness, our awareness and work at higher level and at deeper layers of our being. Otherwise, in the absence of a form as a constant reminder, the ideal remains for a while in mind and evaporates.

The form that enters our consciousness becomes a part of our awareness giving constant Light and it speaks in our heart as the 'inner voice'. We undergo a real transformation. We emerge out from our animal nature, transcend our human nature and become divine. We live as gods on this earth. That is the purpose of image at home, in temples and on the national and international platform.



Monument at a Glance

The Statue : A magnificent 100 feet monolithic (single stone) image of "Swami Vivekananda", weighing approximately 2500 tons, it will be the biggest monolith in the world by all standards, amongst the existing ones so far.

The Stone : The stone required is of dimensionally 110ft X 32ft X 20ft. After an extensive search, the site for stone extraction was finally located at a quarry in Jarkal, 1.2Kms from the erection site. The extracted block will weigh 4500 tons.

Transportation & Erection : Statue shall be transported through 1.2Kms by a 720 wheeled trailer. The road will be remoulded to 40 Feet width. The erection of Monument shall be done by 'Modular Jacking Tower System'.

Schedule :

- i. Stone extraction and Carving of statue: 2014- 2017
- ii. Installation site and road making through: 2015- 2017
- iii. Transportation & Erection by: 2017

Estimated Project Cost : The total estimated cost for Stone extraction, Statue Carving, Transportation and Erection would be Rs. 49.50 Crores.

Current Phase

Stone Quarrying : The stone extraction phase is under progress. The Karnataka State Government has granted permission for stone extraction under special category as this is a project of national importance. We have successfully removed the first and second layers of unwanted stone.

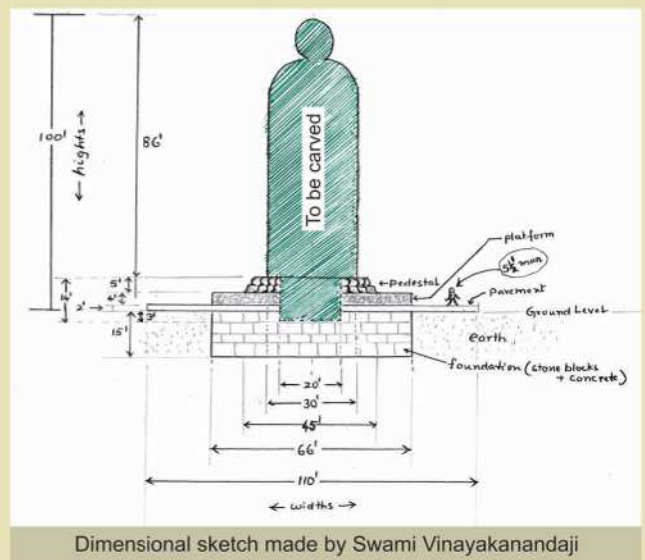
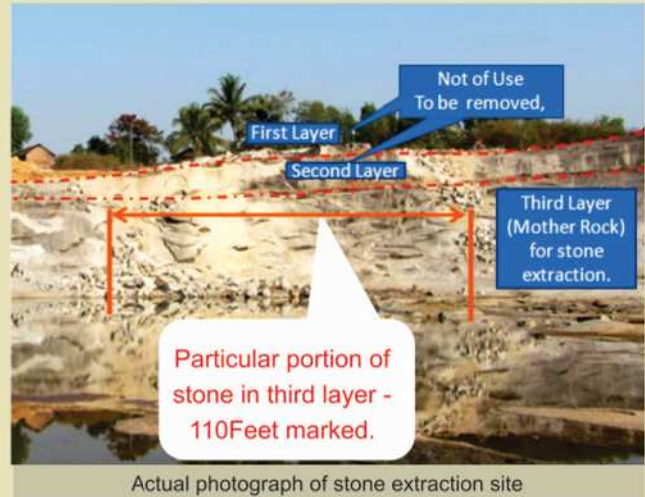
Land Acquisition : A suitable site of 35acres for Monument erection and proposed Cultural, Spiritual and Educational centres has been identified at a short distance of 1.2Kms from the quarry and is located on the Udupi-Karkala-Dharmasthala State Highway, near Bailur Town. The amount to be raised for Land Acquisition is Rs. 10 Crores.

(Note: Please visit our website for latest updates)

Appeal

This is a project of historical and international importance where all the enabling forces have to come together: physical, intellectual, moral, monetary, power of the machinery, above all the power of unremittingly spiritual grace. Please help us, in all possible ways to bring this Divine initiative to a grand success.

Here are the details of our account: SB A/c No. 01212200091140, IFSC Code: SYNB0000121, Syndicate Bank, Bailur, Karkala DD/Cheques etc. should be drawn in favour of "Sri Ramakrishna Sharada Ashrama Trust, Bailur"



Dimensional sketch made by Swami Vinayakanandaji

Ever yours in the service of the Lord,
Swami Vivekananda Global Monument Committee
Sri Ramakrishna Sharada Ashrama, (Bailur Math)



Our Committee Members

(Missionary and Service Wing)

Advisory Council

Padmabhushana Dr. D. Veerendra Hegde - Dharmadhikari, Sri Dharmasthala Manjunatheshwara Temple

Padmabhushana Dr. B. M. Hegde - Noted Cardiologist, Medical, Health Science and Social Reformist, Mangalore

Mr. B. Jagannath Shetty - MD Hotel Vaishali Group, Pune

Padmabhushana Dr. Deviprasad Shetty - Chairman, Narayana Hrudayala, Bangalore

Mr. Jaya C. Suvarna - Honorary President, Billawa Maha Mandala

Dr. Dineshchandra Hegde - Medical Practitioner, Bailur, Karkala

Smt. Sandhya S. Pai - Chief Editor, Tarang, Manipal Media Group, Manipal

Mr. G. D. Rao - Director, Ever Green Industries, Mumbai

Dr. Ramananda Shetty - Ex Vice Chancellor, Rajiv Gandhi Health & Science University, Bangalore

Mr. Ammunje Ramesh Nayak - Entrepreneur and Treasurer Udupi Chamber of Commerce & Industries

Working Committee

Mr. K. G. Raghavan - Senior Advocate, Bangalore

Mr. H. V. Gowthama - Senior Chartered Accountant, Bangalore

Mr. C. Devrajan - CMD, URC Group of Companies, Erode

Mr. Manandi Suresh - Entrepreneur, Past District Governor - Rotary Bangalore & Past President FKCCI

Mr. M. C. R. Shetty - Entrepreneur and Past President KASSIA

Smt. Shakuntala Iyer - Noted Social Activist, Bangalore

Mr. Kishore Hegde - Director, Nirman Road Constructions, Bangalore



Even the least work done for others awakens the power within;
even thinking the least good of others gradually instils
into the heart the strength of a lion.

- Swami Vivekananda



Swami Vivekananda's contributions to the Nation and the World : A New Perspective

Sri Ramakrishna has descended to this earth for redemption of mankind. With the Power and Authority bestowed by him, Swami Vivekananda forged ahead to promote the upliftment of the world, upliftment of the Nation and upliftment of the individual souls. Rare and far apart are such souls that sanctify the earth; and the Mother Earth enshrines them in her bosom with pride. Swami Vivekananda is one of the main moulders of the modern world of positive advancement. His momentous and significant historical contribution to the world and the nation can be summarized as:

- The Oneness based on Spirituality, the Spiritual Oneness, alone is everlasting. The peace he propagated was not the absence of war, but peace of Spiritual Oneness, 'I am yourself, you are myself'. It is to link ourselves to the foundation of all life and Creation, the Ground itself. It is to gain 'Real Identity' of man with the Existence itself.
- He was the starting point of the modern spiritual renaissance. Man's spiritual and religious understanding (of Indian as well as of the world) was poured into the smelting crucible for purification and recasting. Religion is relation between God and soul; and its realization. Spirituality is that which takes every man to a state of Eternal Freedom, everlasting Peace and Bliss.
- Eschewing all the non-essentials which had taken elaborate procedures, the pure essence of man's life and religion were milked out and given to mankind.
- The world's religious thought was enriched by sowing the seeds of spirituality and by reinforcing it with philosophical conceptions. East and west were made to join hands for the world's betterment.
- He initiated, inspired and activated the spirit of patriotism in the heart of Indian nationals making them duty-conscious and filling their hearts with strength, love and dedication for the Nation. He raised India and its image on the world-platform to its supremacy.
- With the inception of Ramakrishna Math and Mission the ancient monasticism was revived on a very large scale recasting it in the form of an orderly institution matching and relevant to the modern times.
- He insisted on the world's need for Indian way of living for greater security and peace and exhorted Indians to exemplify it through their life, conduct and sacrifice. On the other hand he cautioned and admonished Indians against imitating the materialistic aspect of the West; at the same time he urged them to learn the best from them, in which he has been deficient and ignorant.
- He touched all aspects of social, economical, material developments including upliftment of women. He has not left out any aspect that man needs, to be eternally happy and peaceful.

In and through all these, we find that Swamiji has been forced out by the Divine Dispensation to deliver His message to mankind. The once unknown wandering monk blossomed into a 'dear-one' of the entire mankind of all times as a reconciling genius, moving among the hearts of every person on the earth as the Herald of Light, Life, Love, Harmony, Peace and Joy.

Swami Vivekananda said: "A hundred thousand men and women, fired with the zeal of holiness, fortified with eternal faith in the Lord, and nerved to lion's courage by their sympathy for the poor and the fallen and the downtrodden, will go over the length and breadth of the land, preaching the gospel of salvation, the gospel of help, the gospel of social raising-up, the gospel of equality"

Do you wish to be the one whom Swamiji has in mind to serve this world and reach Perfection? Come, dedicate yourself for the service of the humanity and for self evolution. A matchless gift to mankind from the Nature and from the Divine that He is, by honouring Him we honour the Divine, we honour the Mother Nature, we honour the mankind, we honour our Nation, we honour ourselves, we honour all that is good and great.

- Swami Vinayakananda

Our Location

The Ashrama is located on the bank of a graceful perennial river, the Swarnaganga. The place is called Yerlapady, Bailur in the famous Karkala Taluk of the Udupi District in the South Canara region of Karnataka. 23 kms to the North is Udupi and 22 kms to the South is Karkala.

- Dharmasthala : 84km
- Sringeri : 80Kms
- Manipal : 19Kms
- Kudremukh : 73Kms
- Mangalore : 56Kms
- Moodbidri : 38Kms
- Bajpe Airport : 62Kms
- Udupi Railway Station : 21kms



New Land Finalised for Monument Erection

Udupi Karkala Main road



Stone Extraction Site

Google map view of Stone Extraction Site To New Land Finalised For Monument Erection
(distance from quarry 1.2 Kms; total extent of land 35 acres)



Sri Ramakrishna Sharada Ashrama (Bailur Math) (R)

Swami Vivekananda Marg, Yerlapady, Bailur, Karkala Tq. - 574102, Udupi Dist., Karnataka.

Ph: +91 9880705858 / +91 8277654495

E-mail: bailurashram1@gmail.com

Website : www.rkashrambailurmath.org